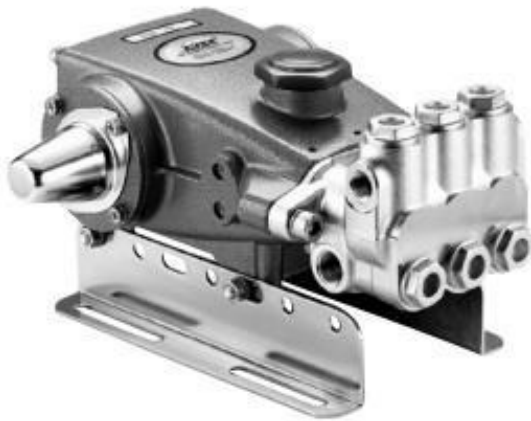




## Technical specifications and instructions



### **5 Frame Plunger pump**

#### **Standard models**

**310, 340, 350**

#### **Special brass models**

**310B, 340B, 350B**

### Specifications (\*)

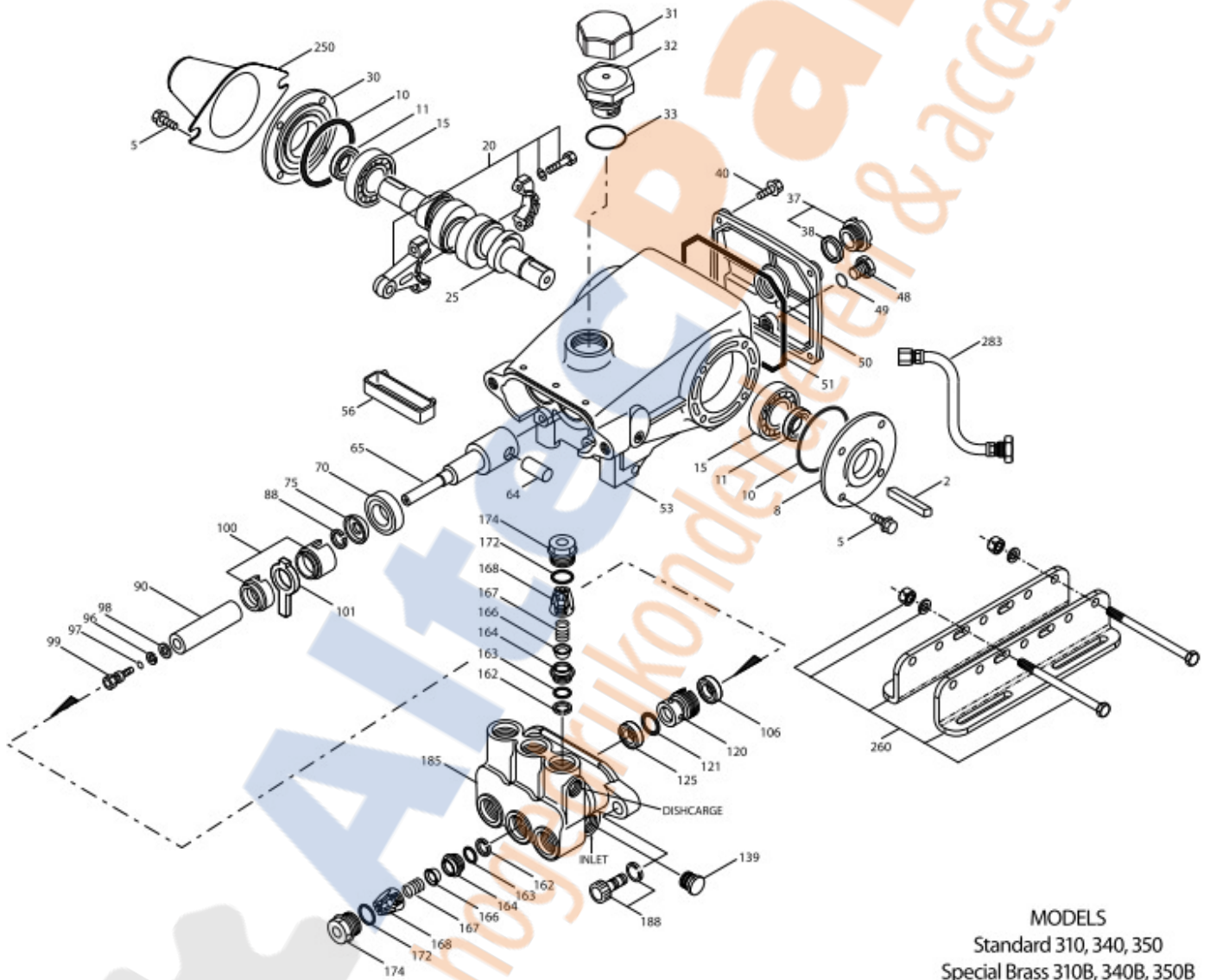
	<b>310, 310B</b> Belt drive	<b>340, 340B</b> Direct drive	<b>350, 350B</b> Direct drive
<b>Flow</b>	15 l/min	13 l/min	15,5 l/min
<b>Pressure range</b>	7 to 150 bar	7 to 150 bar	7 to 150 bar
<b>RPM</b>	950 RPM	1420 RPM	1420 RPM
<b>Inlet pressure range</b>	-0,35 to 4 bar	Flooded to 4 bar	Flooded to 4 bar
<b>Stroke</b>	18 mm	10 mm	12 mm

### Common specifications

<b>Bore</b>	20 mm
<b>Crankcase capacity</b>	0,55 l
<b>Maximum liquid temperature</b>	71° C
<b>Inlet ports (2)</b>	1/2" NPTF
<b>Discharge ports (2)</b>	3/8" NPTF
<b>Shaft diameter</b>	20 mm
<b>Weight</b>	9 kg
<b>Dimensions</b>	298 x 254 x 133 mm

(\*) Abnormalities permitted only after consultation and written confirmation from Cat Pumps.

# Exploded View



MODELS  
Standard 310, 340, 350  
Special Brass 310B, 340B, 350B  
May 2015

# Parts list

Item	Num.	Mat.	Description	Qty
2	30057	STL	Key (M6x6x25)	1
5	125824	STCP R	Screw, HHC, sems (M6x16)	8
8	43344	AL	Cover, bearing	2 ½
10	43343	NBR	O-ring, bearing cover – 70D	2
11	43222	NBR	Seal, oil, crankshaft	2 ½
15	14480	STL	Bearing, ball	2
20	45883	HS	Rod, connecting assy {09/05}	3
25	<b>43342</b>	<b>FCM</b>	Crankshaft, dual end – M18 (310, 310B)	1
	<b>44945</b>	<b>FCM</b>	Crankshaft, single end – M10 (340, 340B)	1
	<b>43838</b>	<b>FCM</b>	Crankshaft, dual end – M12 (350, 350B)	1
30	44949	AL	Cover, blind shaft (340, 340B)	1
31	828710	-	Protector, oil cap w/foam gasket	1
32	43211	ABS	Cap, oil filler	1
33	14177	NBR	O-ring, filler cap – 70D	1
37	92241	-	Gauge, oil, bubble w/gasket	1
38	44428	NBR	Gasket, flat, oil gauge – 80D	1
40	126541	STCP R	Screw, HHC, sems (M6x20)	4
48	25625	STCP	Plug, drain (1/4" x 19 BSP)	1
49	23170	NBR	O-ring, drain plug – 70D	1
50	48772	AL	Cover, rear {10/1} (see TB 090)	1
51	48773	NBR	O-ring, rear cover {10/1} (see TB 090)	1
53	48769	AL	Crankcase {05/02} (see TB 090)	1
56	43355	POP	Pan, oil	1
64	43351	CM	Pin, crosshead	3
65	43365	ZZCP	Rod, plunger	3
70	43228	NBR	Seal, oil, crankcase	3
75	43328	S	Slinger, barrier	3
88	45697	S	Washer, keyhole (M18x10)	3
90	43367	CC	Plunger (M20x72)	3
96	43235	PTFE	Back-up-ring, plunger retainer	3
97	17399	NBR	O-ring, plunger retainer – 80D	3
	14160	FPM	O-ring, plunger retainer – 80D	3
	# 46204	EPDM	O-ring, plunger retainer – 70D	3
98	45891	CU	Gasket	3
99	104360	S	Retainer, plunger w/stud	3
100	45688	PVDF	Retainer, seal (2pc) {04/06} (see TB 105)	3
101	43302	-	Wick, long tab	3
106	43305	NBR	Seal, LPS w/S-Spg	3
	45153	FPM	Seal, LPS w/SS-Spg	3
	# 48429	EPDM	Seal, LPS w/SS-Spg	3
	76305	ST2	Seal, LPS w/S-Spg	3
120	45679	BB	Case, seal	3
121	14200	NBR	O-ring, seal case – 70D	3
	11719	FPM	O-ring, seal case	3
	# 48907	EPDM	O-ring, seal case	3
125	43307	SNG	Seal, HPS w/S	3
	44936	FPM	Seal, HPS w/SS	3
	46667	HT	Seal, HPS 'Hi-temp', 2-pc w/S-support	3
139	22179	BBCP	Plug, inlet (1/2" NPT)	1
162	48361	D	Back-up-ring, seat	6
163	43358	NBR	O-ring, seat – 70D	6
	44938	FPM	O-ring, seat – 70D	6

	# 48908	EPDM	O-ring, seat	6
164	43725	S	Seat	6
166	43723	S	Valve	6
167	43750	S	Spring, valve	6
168	44565	PVDF	Retainer, valve spring	6
172	17615	NBR	O-ring, valve plug – 75D	6
	15855	FPM	O-ring, valve plug – 70D	6
	# 48431	EPDM	O-ring, valve plug – 75D	6
174	43849	BBCP	Plug, valve	6
185	<b>44837</b>	<b>BBCP</b>	Head, manifold (310, 340, 350)	1
	<b>49721</b>	<b>SBCP</b>	Head, manifold (310B, 340B, 350B)	1
188	126520	STCP R	Screw, HSH, sems (M10x35)	2
250	118672	STCP	Protector, shaft (belt drive only)	1
255	30243	STZP	Mount, direct (belt drive only)	1
260	30611	STZP	Mounting, angle rail (belt drive only)	1
265	30659	-	Mount, assy (incl. 30611 30633 118672) (belt drive only)	1
270	30633	STL	Assy, pulley & key (incl. 30058,30057) (belt drive only)	1
275	30944	STL	Assy, hub & key (incl. 30057, 30945) (belt drive only)	1
283	34334	-	Kit, oil drain (3/8"x24")(see individual datasheet)	1
	76334	-	Kit, oil indicator (3/8"x24") (see individual datasheet)	1
299	<b>810027</b>	<b>BBCP</b>	Head, complete (310, 340, 350) <b>standard</b>	1
	<b>818471</b>	<b>SBCP</b>	Head, complete (310B, 340B, 350B) <b>standard</b>	1
300	30623	NBR	Kit, seal (incl. 97,101,106,121,125) <b>standard</b>	1
	34155	FPM	Kit, seal (incl. 97,101,106,121,125)	1
	33623	HT	Kit, seal 'Hi Temp' (incl. 97,101,106,121,125)	1
	# 31163	EPDM*	Kit, seal (incl. 97,101,106,121,125)	1
310	30821	NBR	Kit, valve, preassembled (incl. 162-164,166-168,172) <b>stand.</b>	2
	31821	FPM	Kit, valve, preassembled (incl. 162-164,166-168,172)	2
	# 31162	EPDM	Kit, valve, preassembled (incl. 162-164,166-168,172)	2
350	30696	STZP	Plier, Reverse	1
351	33004	STZP	Socket, seal case (1/2" drive)	1

**Bold print part numbers are unique to a particular pump model. Italics are optional items.**

# Silicone oil/grease required. R Components comply with RoHS Directive.

{ } Date of latest production change. \* Review individual parts in each kit for material code identification.

See 'Tech Bulletins' 002, 003, 008, 024, 027, 032, 035, 036, 043, 045, 046, 049, 052, 053, 054, 073, 074, 077, 079, 083, 090, 105 for additional information.

Material codes: (not part or part number)

ABS	ABS plastic	FCM	Forged chrome-moly	SBCP	Special brass / chrome plated
AL	Aluminium	FPM	Fluorocarbon	SNG	Special blend (Buna)
BB	Brass	HS	High strength	ST2	Special PTFE 2
BBCP	Brass/chrome plated	HT	High Temp (EPDM alternative)	STL	Steel
CC	Ceramic	NBR	Medium nitrile (Buna-N)	STCP	Steel/chrome plated
CM	Chrome-moly	POP	Polypropylene	STZP	Steel/zinc plated
CU	Copper	PTFE	Pure polytetrafluorethylene	ZZCP	Chrome plated/steel zamac
D	Acetal	PVDF	Polyvinylidene fluoride		
EPDM	Ethylene propyl. diene mon.	S	304SS		